

**Grace Park Educate Together National School
Percent for Art Commission
Permanent Visual Artwork**



Budget €41.500

Stage 1

Briefing Document & Application

Deadline for Applications:

12 noon, Wednesday 26th June, 2024

Introduction and Context:

Background:

Grace Park Educate Together National School was established in 2015 and opened its doors to Junior Infants in 2016 with 28 students and 2 full time staff members. Following periods of time in temporary accommodation in Drumcondra and Glasnevin, construction on our permanent building began in 2018 and was completed in 2020. In October 2020 we moved into our forever home with 231 children. As of 2023 we are at full capacity with 423 students and our first 6th class will graduate in June 2024. We have 16 mainstream classes and two Autism classes in our school.

Grace Park ETNS is a child-centred, co-educational, equality based and democratic primary school under the patronage of Educate Together. We aim to provide a learning environment that encourages and promotes the holistic development of each and every child attending our school. We aspire to create an inclusive atmosphere which values each member of the school community for the contribution they make to school life. We follow the Berry Street Education Model (BSEM) approach to trauma informed practice in our school.

The children, parents/guardians and staff work in partnership, based on mutual respect and best practice, to make this vision a reality.

Grace Park Educate Together School Values:

- Our school values are at the core of what we do, we embrace the [Berry Street Education Model](#) (Trauma Informed Education) in our school.
- Our 5 core values are:
 - Be Kind
 - Be Safe
 - Be Respectful
 - Be Ready to Learn
 - Belong.
- These values are visible throughout our school, in our words, thoughts and actions, and are discussed in our classrooms on a daily basis, as well as in whole school assemblies. We assume honourable intentions always and practise unconditional positive regard for one another.
- The four key principles of the Educate Together Ethos are:
 - Equality Based
 - Child-Centred
 - Democratically Run
 - Co-educational.
- These principles are set out in the [Educate Together Charter](#) and underpin all aspects of school life in Grace Park Educate Together National School for the whole school community.
- All artworks and processes must be respectful to all faiths and align with the Educate Together Ethos.

School demographic

Grace Park ETNS has 423 students, with 16 mainstream classes from Junior Infants to 6th Class and 2 Autism Classes. We have 25 teachers and 16 additional needs assistants (ANAs) working alongside the children in our school. Our students come from the catchment areas of Dublin 1, Dublin 3, Drumcondra and Marino, with a diverse range of family backgrounds.

Collaboration and partnership between parents/guardians and our school is of great importance to us and we are delighted to have an active Parents Teachers Association that organises and assists in many events throughout the year such as bake sales, Grandparents Day and the Scholastic Book Fair.

Grace Park Educate Together National School is uniquely located on the DCU All Hallows Campus in the heart of upper Drumcondra, surrounded by the old stone buildings and trees of the college campus. Our location plays a central role in our teaching and learning, and we endeavour to include our local natural environment in our teaching and learning.

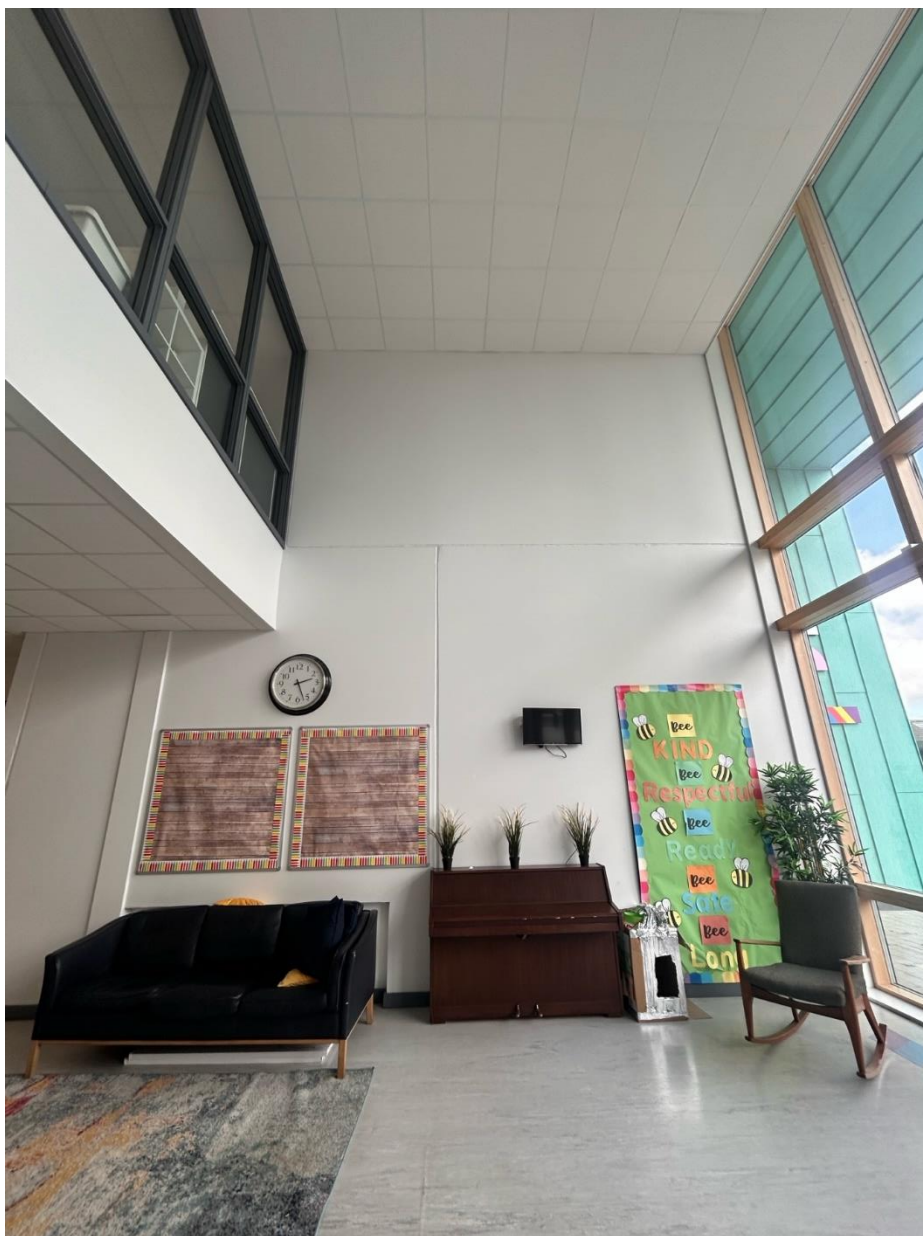
Our school community is a hive of activity with numerous after school activities provided by our own staff members including yoga, mindfulness, debating, arts and crafts, knitting, dance, science and board games.

As a school we participate in Cumann na mBunscol GAA activities with an energetic Camogie, Hurling and GAA team for senior students and we have many external sporting coaches that visit our school throughout the year. Our school choir takes part annually in the Peace Proms Cross Border Orchestra of Ireland performance and regularly showcases their talents throughout the year in school. Our 3rd Class students also participate in a Forest Schools programme with Global Action Plan and take on a conservation role for our wonderful school grounds, with a strong emphasis on sustainability.

Pupil voice and autonomy is of great importance at Grace Park Educate Together National School with many opportunities provided to our students to volunteer, get involved and use their voices to actively participate in our democratic school community. We have a Student Council and Green Schools Committee in our school with student representatives elected from each class/year group to help inform decisions in our school.

The school asks that artists who apply consider the following:

- Grace Park Educate Together Public Art Working Group are seeking expressions of interest from artists whose practice focuses on permanent visual artwork(s) to be sited in the foyer of their school building in a visual medium.
- The school is open to the idea of the artworks travelling throughout the interior of the building also once this does not impact on the budget for an engagement process with all of their students.
- It is expected that artwork(s) will be interactive for the children in this age group – 5 – 12 years.
- The Public Art Working Group are not interested in the Digital Art Medium for this commission.



Grace Park ETNS School Foyer Area

- The engagement process should involve a creative and meaningful engagement process with all of their 423 students of which there are 10 streams (20 classes) (Junior/Senior Autism Class, Junior Infants-6th Class). Workshops in classes can be supported by teachers and parents as volunteers.
- It is hoped that the children's artworks from their participation will be celebrated in an exhibition following the commission as part of the legacy of this project.
- The Public Art Working Group is seeking Artwork(s) that will embrace the school in its special location, its values and focus on their community of children, teachers and parents, biodiversity and local natural environment.
- The Public Art Working Group also require the artwork / artworks proposed at Stage 2 be low maintenance, adhere to health and safety standards and will stand the test of time in their relevance and materials.
- The school does not wish to visualize any religious imagery in their artwork(s).

The Commissioning Process:

The selection process will take the form of a Two Stage Open Competition. It is open to all interested professional artists at any stage of their career or experience who are interested in working on a commission to create permanent visual works to be sited in the GP ETNS foyer and that will allow meaningful engagement with all of their students.

Selection will be based on the information supplied by the artist to establish the competence of the artist(s) to carry out this commission.

No designs or detailed proposals are required at Stage 1, the above information is to inform the applying artists of what will be expected should they be shortlisted to develop proposals.

Stage 1

Artists are invited to express their interest in being considered for this project at the first stage of this commission. Artists may do this by completing the application form and submission of a CV and good quality labelled images / details of recent relevant works / projects. Collaborative partnerships are welcomed but must be stated and roles clarified on application at Stage 1.

The closing date for receipt of Stage 1 completed application form together with supporting documentation and material is 12 noon, Wednesday 26th June 2024.

From the completed Stage 1 applications; a shortlist of artists will be selected by panel jury. This panel, whose decision is final, has the right to clarify any issue which may arise in the course of selection. A proposal development fee of €350 will be paid to the unsuccessful shortlisted artists.

A Stage 2 brief and drawings will be available to shortlisted artists to support the development of proposals.

A site visit will take place on Friday 12th July 2024 time TBC.

Grace Park ETNS reserve the right not to proceed with any submissions received.

Selection Panel:

The Selection Panel will consist of members of the Public Art Working Group, two Professional Artists and will be chaired by the Curator / Project Manager.

Project Delivery Timeline:

It is anticipated that the project would commence in Summer 2024 and be completed by **June 2025**. The artist should demonstrate their ability to fulfil this timeframe. The final timeline will be agreed with the commissioned artist at contract stage.

Budget:

The total budget for the project is **€41,500**. This includes the costs of any materials, artist's fees, design development, engagement process, artists' insurance, supply, delivery and installation, signage, travel, and any other costs incurred in the production of the project / artwork. The artist will be responsible for meeting all of these costs out of the total budget allocated.

Site Location:

Grace Park ETNS, DCU All Hallows Campus, Grace Park Road, Drumcondra, Dublin 9

Site Visits:

Site visits will be arranged for shortlisted artists at Stage 2 of the commissioning process. Site visits will take place Friday 12th July, 2024 time to be confirmed.

Queries:

Applicants can make enquiries regarding the commission to **Rina Whyte**, email [**rinawhyte@yahoo.com**](mailto:rinawhyte@yahoo.com) or by telephone + 353 87 238 9591.

Please follow these Guidelines when preparing your application:

It is recommended that you read and follow these guidelines and supply supporting documentation and material by email to [**rinawhyte@yahoo.com**](mailto:rinawhyte@yahoo.com) as requested.

1. **Include a current CV.**
2. **Include the best images as examples and reproductions of your work/working practice that best demonstrate your experience for this commission. Please do not send original artworks.**
3. **Please complete the application form clearly in ink or type, incomplete applications will not be accepted. Please ensure email addresses are clearly legible.**
4. **Please supply the following information below the images of projects you have previously worked on in your submission: artist's name, budget, timeframe, completion date and location.**
5. **Should you wish to apply as a collaborative, please clearly outline and credit each artist's work in the submission. If you have not previously collaborated on a project, please outline how you intend to work together on this commission.**
6. **Please keep submissions to maximum two documents in pdf format.**

Percent for Art Commission

Grace Park Educate Together, Drumcondra, Dublin.

Stage 1 – Application Form

Name of Artist: _____

Contact details:

Telephone/Mobile: _____ email: _____

1) Please give short description of your art practice in its relevance to this project:

2) Artists are asked to checklist against the following:

- a. Detailed Curriculum Vitae
- b. List of previous relevant projects or commissions, budget, date, location, time scale to deliver, list of specialist or other contractors engaged by the artist in connection with the completion of these installations
- c. Visuals of previous work that are relevant to this commission brief
- d. Names of referees and their contact details
- e. Confirmation that if successful the artist is ready to submit current Tax Clearance Certificate / Number, Artist Exemption Certificate and provide insurance details. This confirmation is mandatory.

Freedom of information:

Applicants completing this form should note that information provided to **Grace Park Educate Together NS** may be disclosed in response to a request made under the Freedom of Information Act (1997 and 2003). Every effort will be made to protect client confidentiality.

Garda Vetting:

The successful artist will be subject to Garda vetting procedures.

General Information:

Where did you hear about the competition, this helps us to direct these commissions effectively (please tick to indicate):

Local Authority Arts Office Website Local Media

VAI Publicart.ie

If other, please specify _____

Declaration

I have read the award conditions, agree to be bound by them, and certify that the information in this application is correct to the best of my knowledge.

Signed _____

Date _____

This application form and supporting information should be completed and returned **by email to rinawhyte@yahoo.com by the deadline of 12 noon, Wednesday 26th June, 2024.**

Please note that applications received after the closing date and time will not be accepted.

TERMS AND CONDITIONS

- The selection panel, whose decision is final, has the right to clarify any unforeseen issues which may arise in the course of selection.
- Artists or teams will be asked to supply the names and contact details of referees as part of the selection process.
- Grace Park ETNS reserves the right to not award the commission.
- The successful artist(s) will be issued with a contract.
- The Public Artwork / sculpture must comply with Health and Safety standards. The successful submissions will be subject to Health and Safety compliance.
- The appointed artist will be required to have the appropriate insurances in place for the duration and scope of the work and its installation.
- The appointed artist must be tax compliant and produce Tax Clearance / Artist Exemption documentation.
- The Commissioners do not insure equipment belonging to the artist or their associates, that is the responsibility of the artist.
- Applicants should note that their total pricing is VAT inclusive, if appropriate to the commission.
- Grace Park ETNS does not bear responsibility for any loss or damage to submissions made to this competition.
- Applications must be made by email to Rina Whyte rinawhyte@yahoo.com
- Late applications will not be accepted.
- Applications / Submissions will be destroyed as a data protection measure.