



ART IN PUBLIC PLACES PUBLIC ART OPPORTUNITY

UMCRMC PARKING GARAGE | EXTERIOR INSTALLATION | LARGO, MD

MODIFIED

REQUEST FOR QUALIFICATIONS

PRINCE GEORGE'S COUNTY, MD

BLUE LINE CORRIDOR

GENERAL PROJECT INFORMATION

Prince George's Arts and Humanities Council in partnership with Prince George's County Revenue Authority and University of Maryland Medical System is seeking to commission one artist or artist team to design, fabricate, and install artwork at the new University of Maryland Capital Regional Medical Center (UMCRMC) Parking Garage located at 900 Harry S Truman, Dr. North. Primary artwork will span the 7-story North, East, and West elevation and be visible from Medical Center Drive, Emergency Drive, and Lottsford Road. The artwork shall help establish an artistic sense of place for county residents and hospital visitors.

SUBMISSION DEADLINE

JUNE 30, 2023

Destination Prince George's:
Telling Our Story

For all inquiries please contact:
Rhonda Dallas | publicart@pgaahc.org

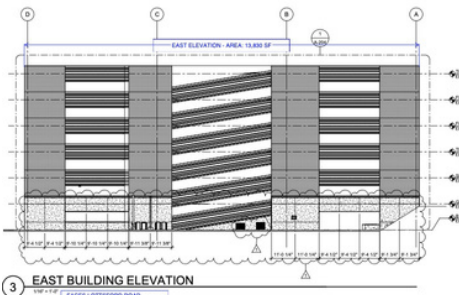


Leuterio Thomas has teamed with Walker Consultants LLC to design the 7-story parking garage for Prince George's County's new medical center. The parking structure holds approximately 1,100 vehicles. The color and texture of the pre-cast concrete play a big role in the design because of the intent of consistency and aesthetic coordination with the main hospital building and the surrounding neighborhood.

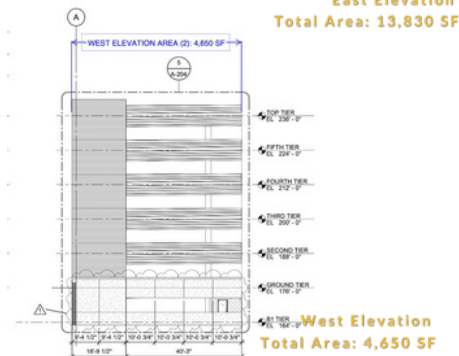


DESIGN VALUES

- Artwork shall be visible to motorist and pedestrians traveling both Northbound and Southbound on Medical Center Drive
- The Artwork shall create a monumental, signature, and wayfinding moment at a multi-modal transportation intersection on the Blue Line Corridor
- The Artwork must take inspiration from historic and culturally iconic elements of Prince George's County
- The artwork can be wrap panels, painted murals, LED lighting or 3-dimensional sculptures



**East Elevation
Total Area: 13,830 SF**



**West Elevation
Total Area: 4,650 SF**

WEST BUILDING ELEVATION (G.L. A THRU B)
FACES EMERGENCY DRIVE
WEST ELEVATION AREA (2): 4,650 SF

ARTIST ELIGIBILITY

- Professional artists and design teams with direct experience with large scale exterior design and installation
- Candidates must demonstrate collaborative project team experience working with other artist and design professionals (engineers, architects, environmental and urban planners, or landscape architects)

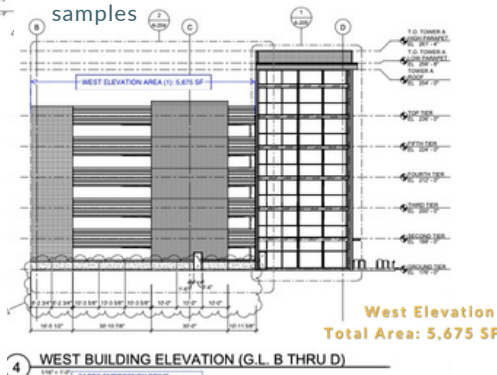
PROJECT BUDGET \$475,000

- Project budget includes artist design fees, materials, fabrication, installation, travel, and any other project expense

SELECTION PROCESS & CRITERIA

- After the submission deadline, Prince George's County Arts and Humanities public art staff will convene a Project Art Advisory Committee composed of Community Stakeholders, artist/design professionals, and project team members including the revenue Authority & UMMS representative
- The Project Art Advisory Committee will screen submissions and decide on the final contract award.

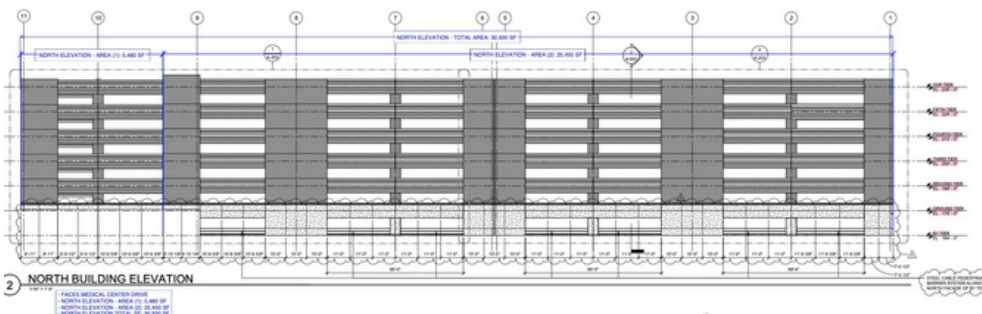
- The Project Art Advisory Committee will use the following criteria to make their selection:
- Artistic merit as evidenced by submitted digital representation of past work samples



**West Elevation
Total Area: 5,675 SF**

- Appropriateness of the artist's medium, style, and previous professional experience as they relate to the public goals and design values of this project
- Experience with projects of similar scale and scope, including a demonstrated ability to successfully collaborate with public agencies, engage in a successful public review process, work well with diverse community groups, and plan and community engagement activities
- Artist's ability to successfully work within the project timeline and budget

**North Elevation Total Area: 30,930 SF
Area 1: 5,480 SF; Area 2: 25,450 SF**



NORTH BUILDING ELEVATION
FACES MEDICAL CENTER DRIVE
NORTH ELEVATION AREA (1): 5,480 SF
NORTH ELEVATION AREA (2): 25,450 SF
NORTH ELEVATION TOTAL SF: 30,930 SF

The Project Art Advisory Committee will review applicants' submitted materials, have an opportunity to ask clarifying questions of applicants initial ideas and approaches to the project in broad conceptual terms and develop a ranked list of two to three qualified candidates who will be invited for interviews.

Finalists will be paid an honorarium to produce a more detailed concept proposal. Following the interview/proposal stage and reference checks, The Project Art Advisory Committee will vote to approve the final artist recommendation. Upon approval, the selected artist or artist team will be issued a design contract. Prince George's Arts and Humanities Council serves as project lead overseeing contract issuance, deliverables, and overall project management

SUBMISSION DEADLINE JUNE 30, 2023

Please apply via [Submittable link](#). Your submission should include the following:

- Name and contact information including resident/primary studio address
- Statement of interest which describes how you will address the project design values
- Preliminary ideas for how you would approach the project and what uniquely bring to enhance overall vision
- Resume/Artist Vitae outlining your professional accomplishments. (If submitting as a team, please identify team leader and include resumes for each team member)
- Images of most recent work that represents your artistic process. (Please limit to 10 images per artist or team member)
- Three professional references that include name, affiliated organization (if appropriate), email address, and phone number

ANTICIPATED SCHEDULE

Submission of Qualifications
JUNE 30, 2023

Selected Finalists
JULY 15, 2023

Award of Contract
AUGUST 15, 2023

Projected Installation
SEPTEMBER 2024