

REQUEST FOR QUALIFICATIONS

The commission opportunity begins with a Request for Qualifications (RFQ) that will expand to a Request for Proposals (RFP) at a later date for qualified semi-finalists.

Permanent Sculpture to Honor Hy Cite Distributors

The Hy Cite Corporation is seeking an artist or artist team for a commissioned outdoor sculpture at their headquarters in Middleton, Wisconsin. This project will honor the work of distributors across North and South America who have helped make Hy Cite one of the leading cookware distributors in the world.

This work will be near the main entry area of the building in the location marked in Figure 1 of the references on page 6. Height should be at least 13 feet or taller.

The final design will serve as an icon for Hy Cite Enterprises for years to come. The commissioner intends to give their top distributors a small scale award sized version of the final sculpture to recognize their hard work and dedication.

CODAworx is opening applications for this commission to all qualified artists with an installation target of Spring 2024.

Media

This sculpture will need to be made of durable material suitable for year round outdoor exposure in Wisconsin. The material must not crack, chip, corrode or show any other significant wear under sub-zero temperatures, and must not contain any hazardous or unsafe materials.

RFQ AT A GLANCE

\$300,000 to \$500,000

commission opportunity

Commissioned by

Hy Cite Enterprises LLC

Middleton

Wisconsin, USA

Eligibility

Open to all artists

February 27, 2023

Deadline to Apply, February 27, 2023, 11:59 pm
Central Standard Time (-5GMT)

Contact: CODAworx RFP Team
Email: team@codaworx-rfp.com
Phone: (608)-716-4269

About the Commissioner

Hy Cite was established in 1959 by Peter O. Johnson, Sr. and a friend, Dave Johnson, while they were still college students. Hy Cite's success story began in Madison, Wisconsin, out of a garage, where they purchased, warehoused and distributed a cookware line.

Presently, Hy Cite has three well-known, premium cookware lines: Royal Prestige, NutraEase and Kitchen Charm, which are exclusively sold by Independent Authorized Distributors in the United States and Canada, as well as numerous countries throughout Latin America, Europe and Asia.

In addition to its corporate headquarters, located in Middleton, Wisconsin, Hy Cite has corporate offices in various Latin American countries, including Mexico, Brazil, Colombia, Peru and Argentina.

Hy Cite helps people better nurture their families by creating exceptional kitchenware and making it attainable to all. This would not be possible without a dedicated team of employees who accelerate the success of entrepreneurial Distributors with innovative service and support. Hy Cite's belief statement is "One entity. One vision. One team."

RFQ KEYWORDS

Entrepreneur

Nutrition

Family

Inspirational

Iconic

Budget and Funding

The budget for the artwork is between \$300,000 and \$500,000. The budget includes artist fees/expenses, design, fabrication, installation costs, permit costs, and insurance costs. Qualifying artists will be interviewed prior to being invited to create a design proposal. Finalists will receive an honorarium of \$1000. to develop and present a proposal, to include a rendering and/or maquette.

Proposed Timeline – Some deadlines may be extended

Call Published	Thursday, January 26, 2023
Deadline to Apply	Monday, February 27, 2023, 11:59 PM CST
Interviews	Monday, March 13, 2023
Three Finalists Selected	Wednesday, March 15, 2023
Presentation of Finalist Design Concepts	Friday, April 7, 2023
Final Artist Selected	Monday, April 10, 2023
Project Installation	Spring 2024

Qualifications

Professional artists and teams of artists are asked to submit:

1. A resume and letter of interest detailing experience managing, designing and completing site-specific art commissions for educational, civic, municipal and state governments or other institutions; or equivalent skills and experience.
2. A portfolio of work samples relevant to this commission with pricing and approximate dates of sale.

Candidates must be 18 years or older and eligible to work in the United States.

Selection Criteria

- Quality of work samples
- Artistic aesthetic
- Ability to work collaboratively with planning groups
- Ability to design and produce a monumental site-specific sculpture.
- Ability to work at large and small scales

Selection Process

- Based on the above criteria a limited number of artists will be selected for a video conference interview with the Selection Team.
- Following the interviews, up to three artists will be selected, each of whom will be asked to submit a design proposal.
- An honorarium of \$1,000. will be paid to each of the selected artists for their design.
- The artwork shall be suitable for public display and be of high artistic quality, appropriate for viewers of all ages.
- The Artist will be selected from the design submissions to work with Hy-Cite as its representatives, through design, fabrication, shipping and installation.

Submission Instructions and Materials

Applications accepted at this link through the CODAworx RFP Portal:

<https://www.codaworx.com/rfp/rfq-permanent-sculpture-to-honor-hy-cite-distributors-middleton-wi>

1. To apply for this opportunity, sign up or login to a free account at www.codaworx.com/register or log into your account at www.codaworx.com/login. Compatible browsers: Chrome, Safari, and Firefox.
2. You may save and return to your application before submitting it. Log into your CODAworx account, click the person icon in the top right, and select My Account. Click RFP Applications to view a list of applications in progress. Click to edit your application.

Required information for this application-

Résumé/CV with References

Submit a brief, current résumé or CV, including:

1. Contact information
2. Your website
3. Previous relevant art commissions
4. Design team experience
5. Exhibitions, awards, grants
6. Education
7. References:

Please include at least three (3) art and/or design professionals who have detailed knowledge of the artist's work and working methods, including fulfilling deadlines, working with the community, etc. Include contact name, organization, address, telephone, and email for each reference.

Letter of Interest

Please submit a targeted letter of interest for this project.

Required information:

1. Your name, address, telephone, email, and website for all artist/design team members.
2. Your interest in this project and your experience working on comparable projects,
 - a. Include your experience with architectural and engineering project teams.
 - b. Include your philosophy on public art, its integration into the surrounding environment and how your work and experience will complement this project.
 - c. Please describe your eligibility towards the criteria for this project.

Submission Instructions and Materials Continued

Artwork Images

In the “Images of Your Work” section of your application on CODAworx, please submit up to 5 (five) images of different completed artworks or past commissions. For each completed artwork, you will be prompted to upload a single, main image and specify the title of the artwork, location, budget (USD), year completed, medium, and dimensions.

Images must be JPG or PNG file format with a minimum of 620px width, a maximum of 1500px, and maximum file size of 5MB. You have the option to provide more images and information for your completed artwork by publishing a CODAworx “project.” Log in to your CODAworx account, click the person icon in the top right, click My Account, and click Projects. Scroll down the page and click Create a New Project. Learn more about how to publish a project here: <http://bit.ly/CODAworxProject> You can upload an unlimited number of projects. Published and unpublished project links can be added to your RFP Toolkit application by grabbing the project’s URL

Slides, prints or any physical submissions of artwork will not be accepted.

Contact

For questions regarding the project goals, selection criteria, CODAworx RFP application platform, please contact:

Sebastian Norback- sebastian@codaworx.com. (608) 716-4269

Suzanne Ball- suzanne@codaworx.com (917) 327-1351

Figure 1- Bird's Eye Landscape Rendering of Hy Cite Headquarters in Middleton WI

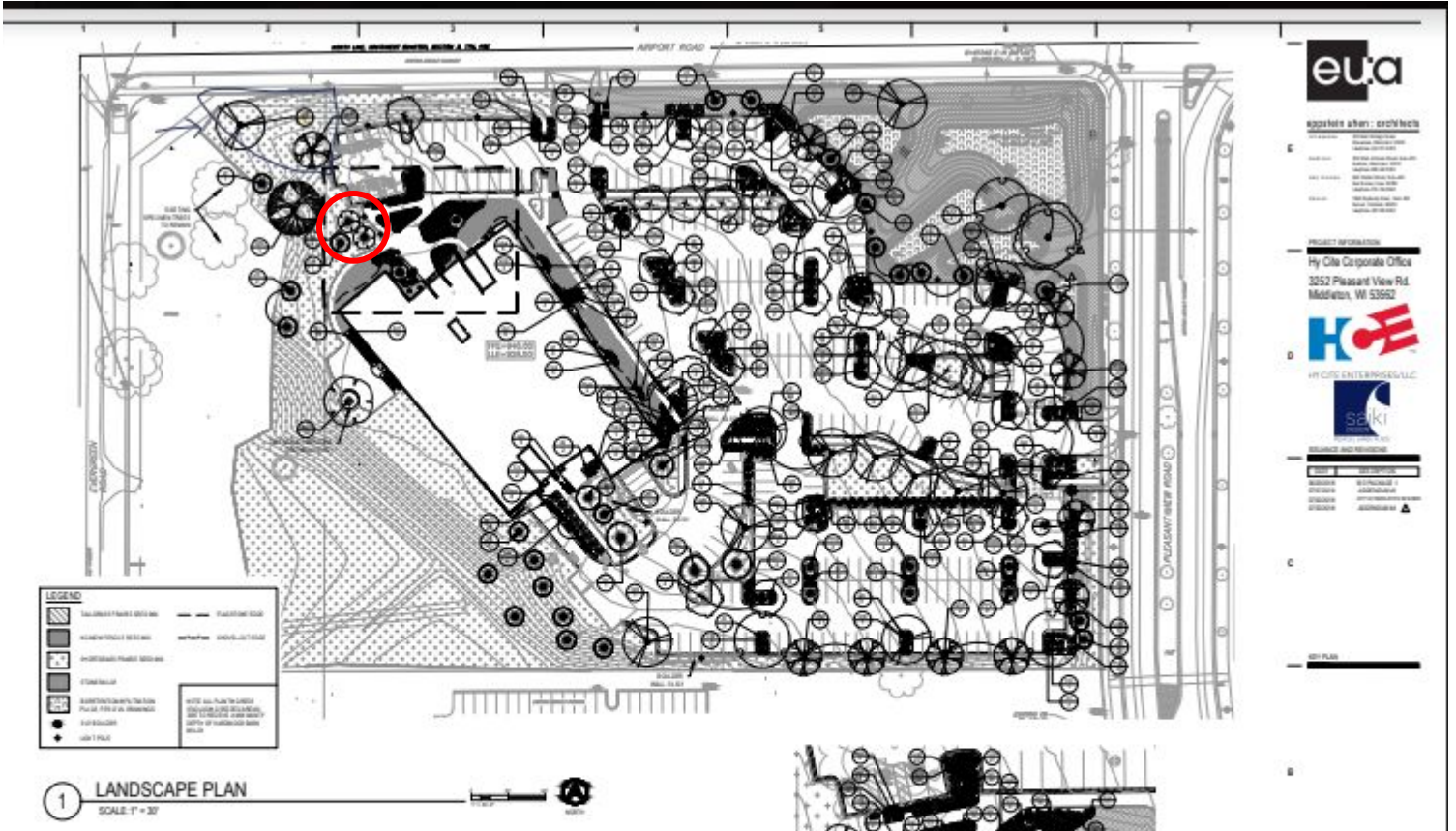
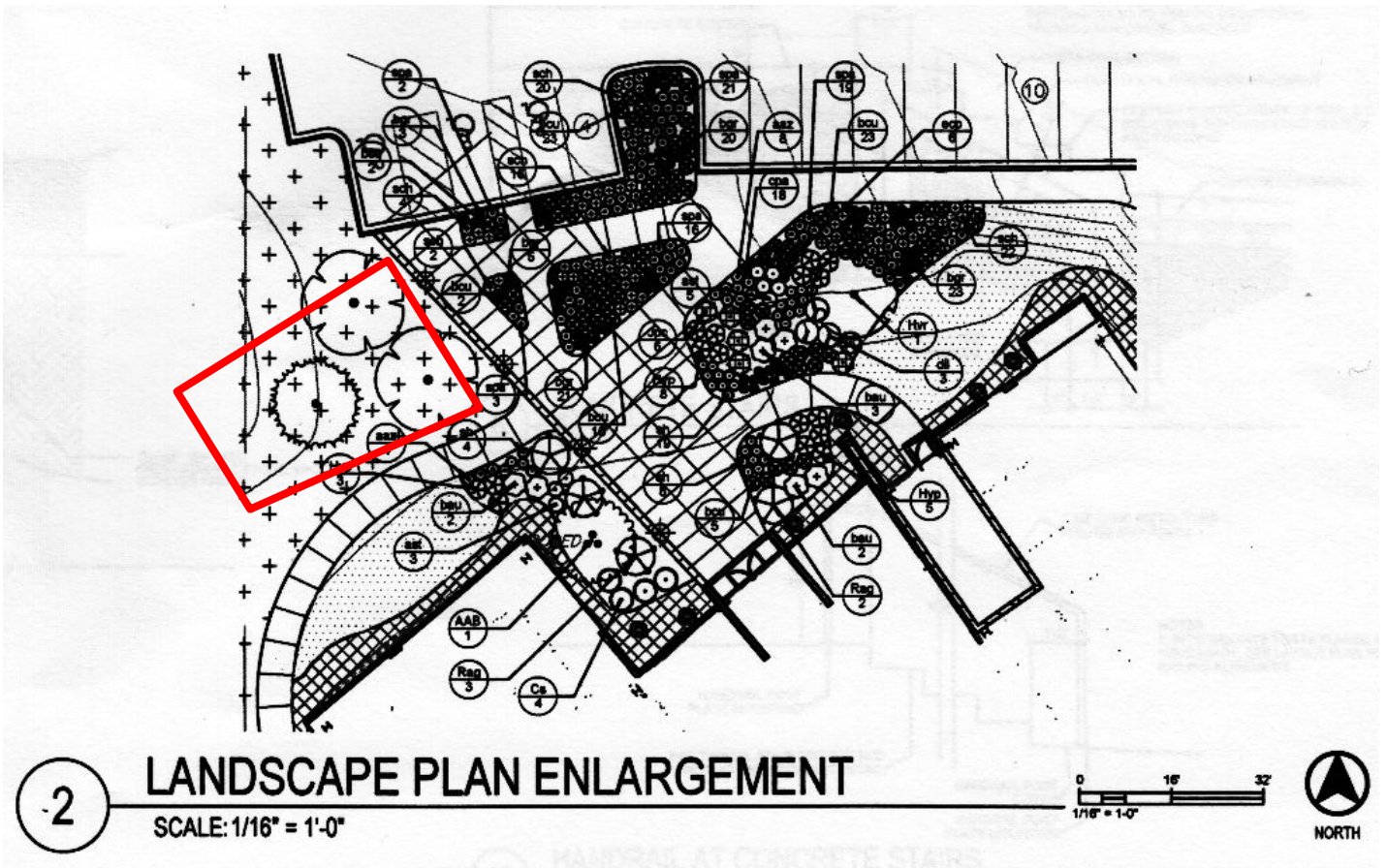


Figure 2- Zoomed In Bird's Eye Landscape Rendering of Proposed Sculpture Site



References Continued

Figure 3- Rooftop Angle With Proposed Sculpture Area Boundaries Marked

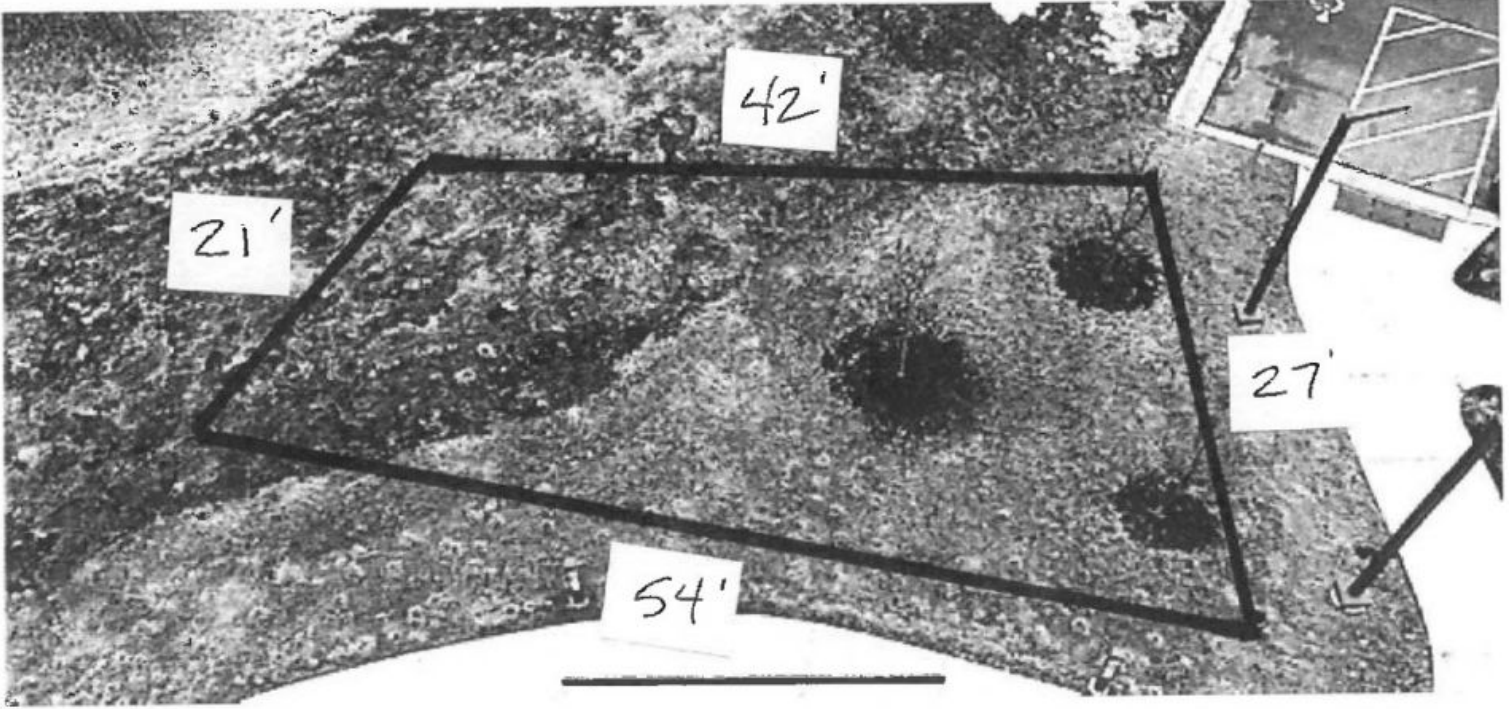


Figure 4- Ground Level Angle Showing First Floor Window Height Dimensions



References Continued

Figure 5- Westward Looking View of Proposed Sculpture Site



Figure 6- Eastward Looking View of Proposed Sculpture Site



References Continued



Figure 7- Northward Looking View of Proposed Sculpture Location from Interior of Hy Cite Lounge



Figure 8- Southward Looking View of Proposed Sculpture Location